

RESOLUTION NO. 1878

A RESOLUTION OF THE CITY COUNCIL OF THE CITY OF SOLEDAD CARRYING OUT PROCEEDINGS DESIGNATED AS "REORGANIZATION INVOLVING ANNEXATION OF THE GUZMAN II SITE AND DETACHMENT OF THE SAME FROM THE MISSION-SOLEDAD RURAL FIRE PROTECTION DISTRICT AND THE GABILAN-SANTA LUCIA RESOURCE CONSERVATION DISTRICT OF MONTEREY COUNTY"

1. WHEREAS, the City of Soledad requested, by application filed with Monterey County Local Agency Formation Commission (LAFCO), that the Guzman II site be annexed to the City of Soledad; and,

2. WHEREAS, the subject property is in the City's Sphere of Influence and,

3. WHEREAS, on August 30, 1988, the Monterey County LAFCO adopted its Resolution No. 88-14 making determinations and approving the proposed annexation of the Guzman II site therein particularly described, to the City of Soledad and the detachment of the same from the Mission-Soledad Rural Fire Protection District, and the Gabilan-Santa Lucia Resource Conservation District; and,

4. WHEREAS, in said Resolution No. 88-14, the Monterey County LAFCO:

- a. Approved the boundaries of the territory proposed to be reorganized, as set forth and described in "Exhibit A," hereunto attached and by reference made a part of this resolution; and,
- b. Found said territory to be uninhabited and assigned to it the following distinctive short form designation: Guzman II Reorganization and,
- c. Designated the City of Soledad as the conducting authority and directed the City Council of said City to initiate reorganization proceedings in compliance with said resolution without public notice;

NOW, THEREFORE, BE IT RESOLVED by the City Council of the City of Soledad as follows:

Section 1. It is hereby found and determined that all of the foregoing recitals are true.

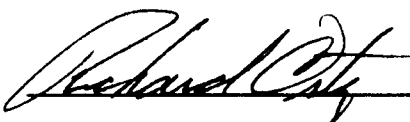
Section 2. It is hereby ordered that the territory which is the subject of this reorganization, the boundaries of which are shown on "Exhibit A", attached hereto and by reference made a part hereof, are hereby annexed to the City of Soledad.

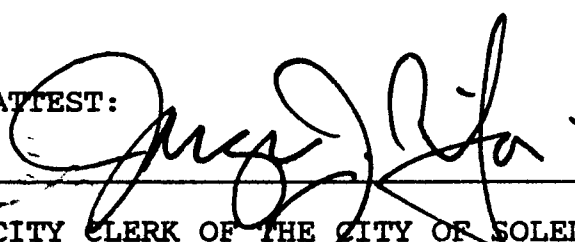
Section 3. It is hereby further ordered that the territory referred to in Section 2 above be, and the same is hereby detached from the Mission-Soledad Rural Fire Protection District and the Gabilan-Santa Lucia Resource Conservation District.

Section 4. The property being annexed will not be subject to the City's existing bonded indebtedness or contractual obligation.

PASSED AND ADOPTED at a regular meeting of the City Council of the City of Soledad on the 28th day of September, 1988, by the following vote:

- AYES, and those in favor thereof, Councilmembers:  
Campos, Ledesma, Untalon, Mayor Pro Tem Slagle, Mayor Oritz
- NOES, Councilmembers: None
- ABSENT, Councilmembers: None

  
MAYOR OF THE CITY OF SOLEDAD

ATTEST:   
CITY CLERK OF THE CITY OF SOLEDAD

44

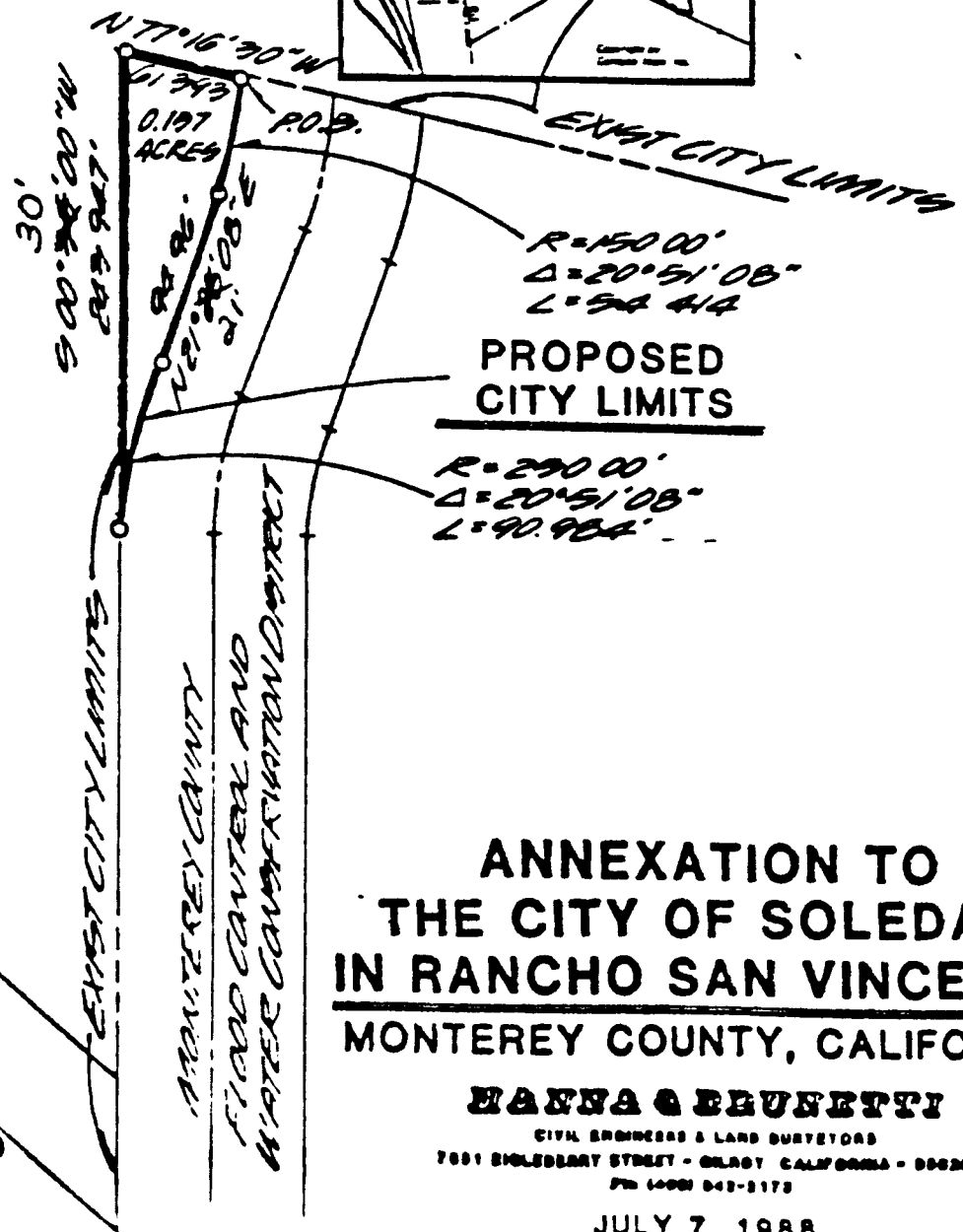
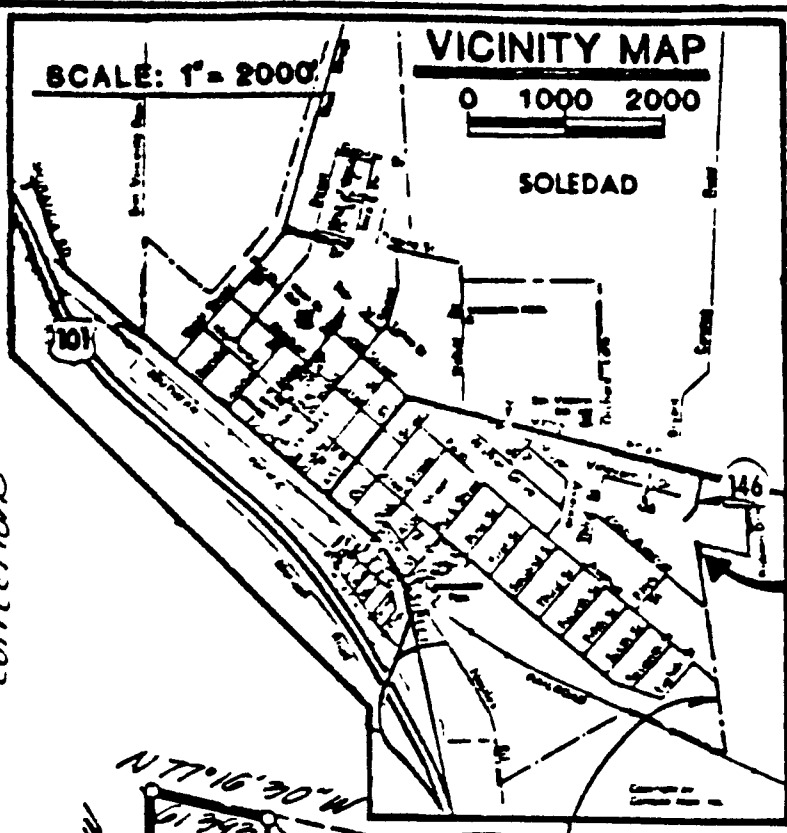
DT/SZ/TZ

APPROVED  
DRAWINGS

TRUE METES AND POUNDS D & METER.  
DEFINITE AND CERTAIN

COUNTY SURVEYOR

*Donald F. Wilson* approved with the noted  
DEPUTY corrections



**ANNEXATION TO  
THE CITY OF SOLEDAD  
IN RANCHO SAN VICENTE  
MONTEREY COUNTY, CALIFORNIA**

**HANNA & BRUNETTI**  
CIVIL ENGINEERS & LAND SURVEYORS  
7001 BLOLEDAVE STREET - OAKLAND, CALIFORNIA - 94620  
PH 415-542-2172

JULY 7, 1988

LEGAL DESCRIPTION FOR THE  
GUZMAN II ANNEXATION TO THE CITY OF SOLEDAD AND THE  
DETACHMENT FROM THE SOLEDAD-MISSION FIRE PROTECTION DISTRICT  
AND THE GABILAN - SANTA LUCIA RESOURCE  
CONSERVATION DISTRICT.  
JULY 7, 1988

Beginning at the intersection of the easterly City Limits Line of the City of Soledad, as said Line bears N.77°16'30"W., with the westerly line of the Monterey County Flood Control and Water Conservation District right-of-way; thence from said point of beginning

Along the easterly City Limits line, N.77°16'30"W., 61.393 feet; thence

Along the easterly City Limits Line, S.00°30'00"W., 243.947 feet; thence

Leaving the easterly City Limits Line, on an arc of a circular curve to the right, with a radius of 250.00 feet, from a radial bearing of S.89°30'00"E. through a central angle of 20°51'08", for an arc distance of 90.984 feet; thence

N.21°<sup>21'</sup>28'08"E., 94.96 feet; thence

On an arc of a circular curve to the left, with a radius of 150.00 feet, through a central angle of 20°51'08", for an arc distance of 54.414 feet, to the easterly City Limits Line and point of beginning along said District right-of-way.

Containing an area of 0.157 acres of land, more or less.

Hanna and Brunetti  
Civil Engineers and Land Surveyors  
7651 Egleberry Street  
Gilroy, California 95020

(408) 842-2173

APPROVED:  
~~DISAPPROVED~~

7/23/88  
DATE

TRUE METES AND BOUNDS DESCRIPTION.  
DEFINITE AND CERTAIN.

COUNTY SURVEYOR  
*Donald F. Wilson*  
DEPUTY

approved with the above noted  
corrections